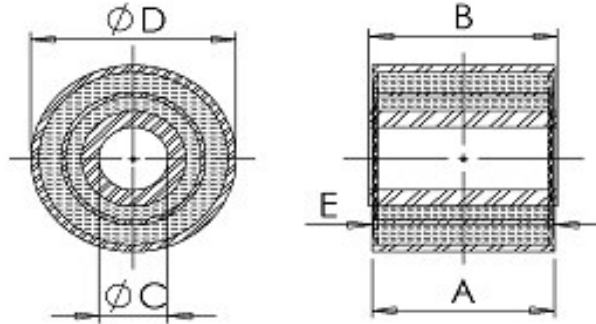


AEGIS RUBBER ENGINEERING LTD

Bolney Grange Business Park, Stairbridge Lane
Haywards Heath, West Sussex, RH17 5PA
Tel. + 44 (0) 1 444 871 116 Fax. + 44 (0) 1 444 248 327

Type CA & CB – Semi & Fully Bonded Duplex Bush – Sheet 1 of 1



Applications

- Vehicle suspension
- Pulverisers
- Pivot bearings
- Wind energy

Description

Duplex bushes are similar to standard bushes (BA & BB Type) but are reinforced with an intermediate tube. Duplex bushes can either be semi or fully bonded depending on size and loads. The bush rubber is pre-stressed to give maximum dynamic strength and durability.

This bush configuration provides high radial load bearing whilst retaining low axial and torsional stiffness rates.

Specifications

Natural Rubber to BS5179:1975

Highest tensile specification achieved for each hardness band. Each band is tighter than allowed by specification.

Tube to: BS6323: Part 4, DIN2393 / DIN1629

Bar to: BS970: Part 1:1983

Tolerances and load-deflection data are available on request

For our current product range, outside diameter ØD ranges from Ø57mm to Ø250mm.

Contact us for more details of our current product range or a quotation for a new product. We can advise price breaks at 20, 50, 100, 500 & 1000 off. info@ae-gis-rubber-eng.co.uk