

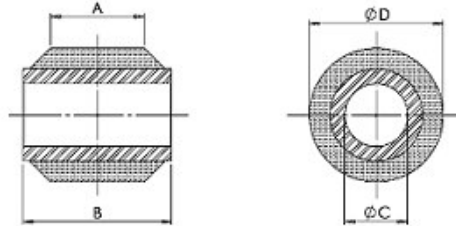
# AEGIS RUBBER ENGINEERING LTD

Bolney Grange Business Park, Stairbridge Lane  
Haywards Heath, West Sussex, RH17 5PA  
Tel. + 44 (0) 1 444 871 116 Fax. + 44 (0) 1 444 248 327

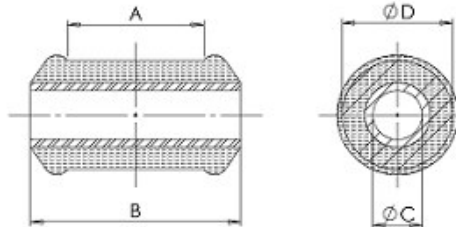
## Type AA – Inner Sleeve Bush – Sheet 1 of 1



Type 1: Parallel



Type 2: Shouldered



### Applications

- Vehicle suspension
- Spring eye bushes
- Cab mounts
- Mechanical linkages
- Bespoke

### Description

AA type bushes consist of rubber bonded to the inner sleeve. The bushes are installed by inserting them into an interference hole onsite. This eliminates necessity for accurate fixtures and thus reduces consumer cost.

Designed to accommodate small torsion, conical and axial movements and endure radial loads. As installed, the rubber is pre-stressed to give maximum dynamic strength and durability.

### Specifications

Natural Rubber to BS5179:1975

Highest tensile specification achieved for each hardness band. Each band is tighter than allowed by specification.

Tube to: BS6323: Part 4, DIN2393 / DIN1629

Bar to: BS970: Part 1:1983

Bushes can be supplied with pins.

Tolerances and load-deflection data are available on request

For our current product range, outside diameter ØD ranges from Ø20mm to Ø78mm.

Contact us for more details of our current product range or a quotation for a new product. We can advise price breaks at 20, 50, 100, 500 & 1000 off. [info@aegis-rubber-eng.co.uk](mailto:info@aegis-rubber-eng.co.uk)